

900/1400 SERIES



PRESSURE WASHERS / SINCE 1970

FEATURES

4.0 - 5.0 GPM @ 2000 to 3000 PSI

208V or 230V, 1PH; 208V, 230V,
460V or 575V, 3PH

Pressure relief valve protects the machine from over pressurization

Dual V-belt for more efficient power transmission

Adjustable upstream detergent injection ensures high-pressure sudsing for better cleaning

Built-in **hose reel mount**

Adjustable **thermostat**

Float tank helps maintain constant water pressure and flow while helping to prevent sediment from entering the machine's components

Hotsy-designed Triplex pumps carry a 7-year limited warranty



HOT WATER

ELECTRIC

BELT DRIVE

BLACK LABEL
EDITION

Upgrade To A Fully Loaded Black Label Edition.

Extra Features Include:

100' Hose & Reel, Water Inlet Solenoid, Drip Pan, Float Tank Cover, & Draft Diverter.

TALK TO YOUR DEALER TODAY!



Black Label version comes with hose & hose reel

Upright, vertical coil with 1/2-inch schedule 80 pipe is wrapped with a thick ceramic fiber insulation, delivering high efficiency and maintains constant temperature using Natural Gas or LP Gas

50-ft. length of high-pressure hose for easy cleaning in a large working area and **insulated Hotsy trigger gun and wand** with ergonomic, adjustable side handle

OPTIONS FOR 900/1400 SERIES

Wired or Wireless Remote Controls for startup, shutdown

8" Gas-Fired Draft Diverter - for natural draft burner operation; prevents downward/upward air affecting burner efficiency

Water Inlet Solenoid - prohibits water flow to float tank during idle

Gas Valve Extension Kit

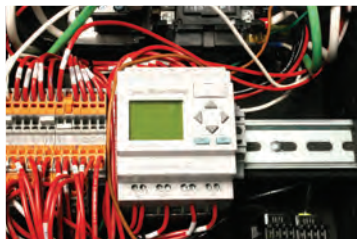
Drip Pan - collects condensation from burner chamber

100' Hose Reel

Float Tank Cover - keeps out debris

Soap Solenoid - use with remote station for on/off detergent control

Black Label Upgrade - 100' Hose & Reel, Water Inlet Solenoid, Drip Pan, Float Tank Cover & Draft Diverter.



Programmable Smart Control Automation provides complete control over the machine's runtime, auto start/stop and time-delay shutdown functionality.

HOTSY.COM NOTHING CLEANS LIKE A **HOTSY!**

900 / 1400 SERIES

Hot-Water **ELECTRIC** Models

STATIONARY PRESSURE WASHERS FOR HEAVY-DUTY CLEANING.

■ NG-Fired or LP-Fired ■ 4.0 to 5.0 GPM @ 2000 to 3000 PSI ■ Hotsy Triplex Pump with 7-yr warranty

MODEL	PART NO.	GPM	PSI	HP	MOTOR RPM	VOLT/PH	AMPS	FUEL	BTU/HR	PUMP MODEL	DIMENSIONS (LXWXH)*	SHIP WT (LBS)
921P	1.109-184.0	4.0	2300	6.2	3450	208/1	32	LP	364,835	HM4035R.3	51.75"x21.3"x51.5"	691
921N	1.109-185.0	4.0	2300	6.2	3450	208/1	32	NG	364,835	HM4035R.3	51.75"x21.3"x51.5"	691
926P	1.109-186.0	4.0	2000	5	1800	575/3	7	LP	364,835	HM4035R.3	51.75"x21.3"x51.5"	647
926N	1.109-187.0	4.0	2000	5	1800	575/3	7	NG	364,835	HM4035R.3	51.75"x21.3"x51.5"	647
942P	1.109-188.0	4.0	2000	5	1725	208/3	18	LP	360,997	HM4035R.3	51.75"x21.3"x51.5"	647
942N	1.109-189.0	4.0	2000	5	1725	208/3	18	NG	364,835	HM4035R.3	51.75"x21.3"x51.5"	647
943P	1.109-190.0	4.0	2000	5	1725	230/1	25	LP	360,997	HM4035R.3	51.75"x21.3"x51.5"	691
943N	1.109-191.0	4.0	2000	5	1725	230/1	25	NG	364,835	HM4035R.3	51.75"x21.3"x51.5"	691
944P	1.109-192.0	4.0	2000	5	1725	230/3	16	LP	360,997	HM4035R.3	51.75"x21.3"x51.5"	647
944N	1.109-193.0	4.0	2000	5	1725	230/3	16	NG	364,835	HM4035R.3	51.75"x21.3"x51.5"	647
945P	1.109-194.0	4.0	2000	5	1725	460/3	8	LP	360,997	HM4035R.3	51.75"x21.3"x51.5"	647
945N	1.109-195.0	4.0	2000	5	1725	460/3	8	NG	364,835	HM4035R.3	51.75"x21.3"x51.5"	647
1451P	1.109-196.0	4.0	3000	8.2	3450	208/1	39	LP	364,835	HM4035R.3	51.75"x21.3"x51.5"	695
1451N	1.109-197.0	4.0	3000	8.2	3450	208/1	39	NG	364,835	HM4035R.3	51.75"x21.3"x51.5"	695
1452P	1.109-198.0	4.0	3000	7.5	1725	208/3	24	LP	360,997	HM4035R.3	51.75"x21.3"x51.5"	692
1452N	1.109-199.0	4.0	3000	7.5	1725	208/3	24	NG	364,835	HM4035R.3	51.75"x21.3"x51.5"	692
1453P	1.109-200.0	4.0	3000	7.5	1725	230/1	34	LP	360,997	HM4035R.3	51.75"x21.3"x51.5"	724
1453N	1.109-201.0	4.0	3000	7.5	1725	230/1	34	NG	364,835	HM4035R.3	51.75"x21.3"x51.5"	724
1454P	1.109-202.0	4.0	3000	7.5	1725	230/3	24	LP	360,997	HM4035R.3	51.75"x21.3"x51.5"	690
1454N	1.109-203.0	4.0	3000	7.5	1725	230/3	24	NG	364,835	HM4035R.3	51.75"x21.3"x51.5"	690
1455P	1.109-204.0	4.0	3000	7.5	1725	460/3	12	LP	360,997	HM4035R.3	51.75"x21.3"x51.5"	690
1455N	1.109-205.0	4.0	3000	7.5	1725	460/3	12	NG	364,835	HM4035R.3	51.75"x21.3"x51.5"	690
1456P	1.109-206.0	4.0	3000	8.2	3450	575/3	10	LP	364,835	HM4035R.3	51.75"x21.3"x51.5"	690
1456N	1.109-207.0	4.0	3000	8.2	3450	575/3	10	NG	364,835	HM4035R.3	51.75"x21.3"x51.5"	690
1473P	1.109-208.0	5.0	3000	10	1725	230/1	42	LP	378,617	HM4035R.3	51.75"x21.3"x51.5"	722
1473N	1.109-209.0	5.0	3000	10	1725	230/1	42	NG	390,025	HM4035R.3	51.75"x21.3"x51.5"	722
1474P	1.109-210.0	5.0	3000	10	1770	230/3	29	LP	378,617	HM4035R.3	51.75"x21.3"x51.5"	699
1474N	1.109-211.0	5.0	3000	10	1770	230/3	29	NG	390,025	HM4035R.3	51.75"x21.3"x51.5"	699
1475P	1.109-212.0	5.0	3000	10	1725	208/3	34	LP	378,617	HM4035R.3	51.75"x21.3"x51.5"	698
1475N	1.109-213.0	5.0	3000	10	1725	208/3	34	NG	378,617	HM4035R.3	51.75"x21.3"x51.5"	698
1476P	1.109-219.0	5.0	3000	10	1725	460/3	34	LP	378,617	HM4035R.3	51.75"x21.3"x51.5"	699
1476N	1.109-220.0	5.0	3000	10	1725	460/3	34	NG	378,617	HM4035R.3	51.75"x21.3"x51.5"	699

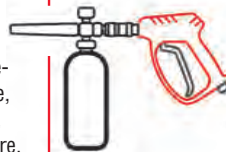
* includes connectors and flue outlet

DETERGENTS



To clean like a pro, you need to include detergents. Hotsy offers a full line of detergents for cleaning grease, dirt, road grime, aluminum, sanitation and so much more. Our detergents help you clean faster and save money.

PARTS & ACCESSORIES



Clean faster and more efficiently with pressure washer accessories like flat surface cleaners and turbo nozzles.

SERVICE



Hotsy factory-trained technicians keep your equipment running with on-site or in shop maintenance and tune-ups. Plus, we repair all brands.

hotsy

Nothing Cleans Like A Hotsy!
EST. 1970

HOTSY.COM

Tel: 800.525.1976

Email: info@hotsy.com

Specifications & product descriptions subject to change without notice. Hotsy's manufacturing facilities have established and apply a quality and environmental management system to be ISO 9001:2008 and ISO 14001:2001 certified.

© 2024 Kärcher North America

NOTE: We are constantly improving and updating our products. Consequently, pictures, features & specifications in this brochure may differ slightly from current models. Flow rates & pressure ratings may vary due to variances allowed by manufacturers of our machine components. We meet the CETA testing specs for machine performance at $\pm 10\%$ and in some cases are tighter within $\pm 5\%$ of listed specifications.

P/N HOT_900-1400 Effective 12/24

Distributed by: